

PROPERTY MAPS
Tax Map U10
LITCHFIELD
 Kennebec County, ME

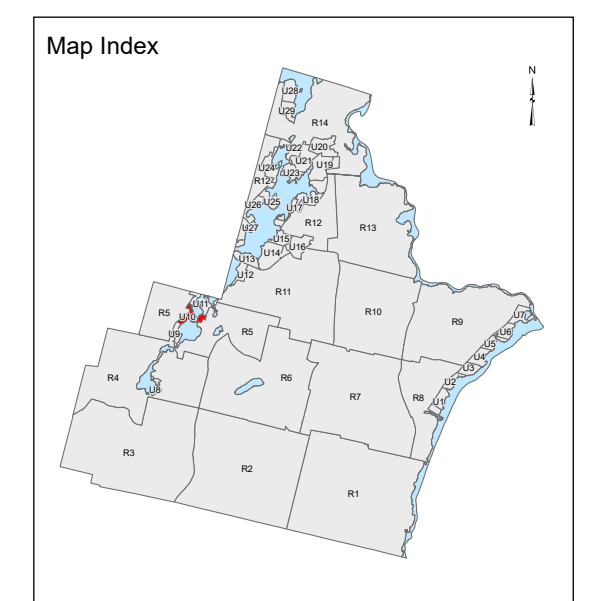


LEGEND

- PROPERTY LINE
- ROADWAY
- PRIVATE RIGHT-OF-WAY
- HISTORIC/SUBDIVISION LINE
- EASEMENT
- STREAMS
- PARCEL HOOK
- 2-1** PARCEL ID NUMBER
- 150' SURVEY DIMENSION (FEET)
- 1.25 AC ASSESSED ACREAGE
- 1 SURVEY LOT NUMBER
- HYDROLOGY
- WETLANDS

The information on this map is for assessment purposes only, is not a legal survey, and is not intended to be used for conveyance.

SCALE: 1 in = 100 ft
 0 100 200

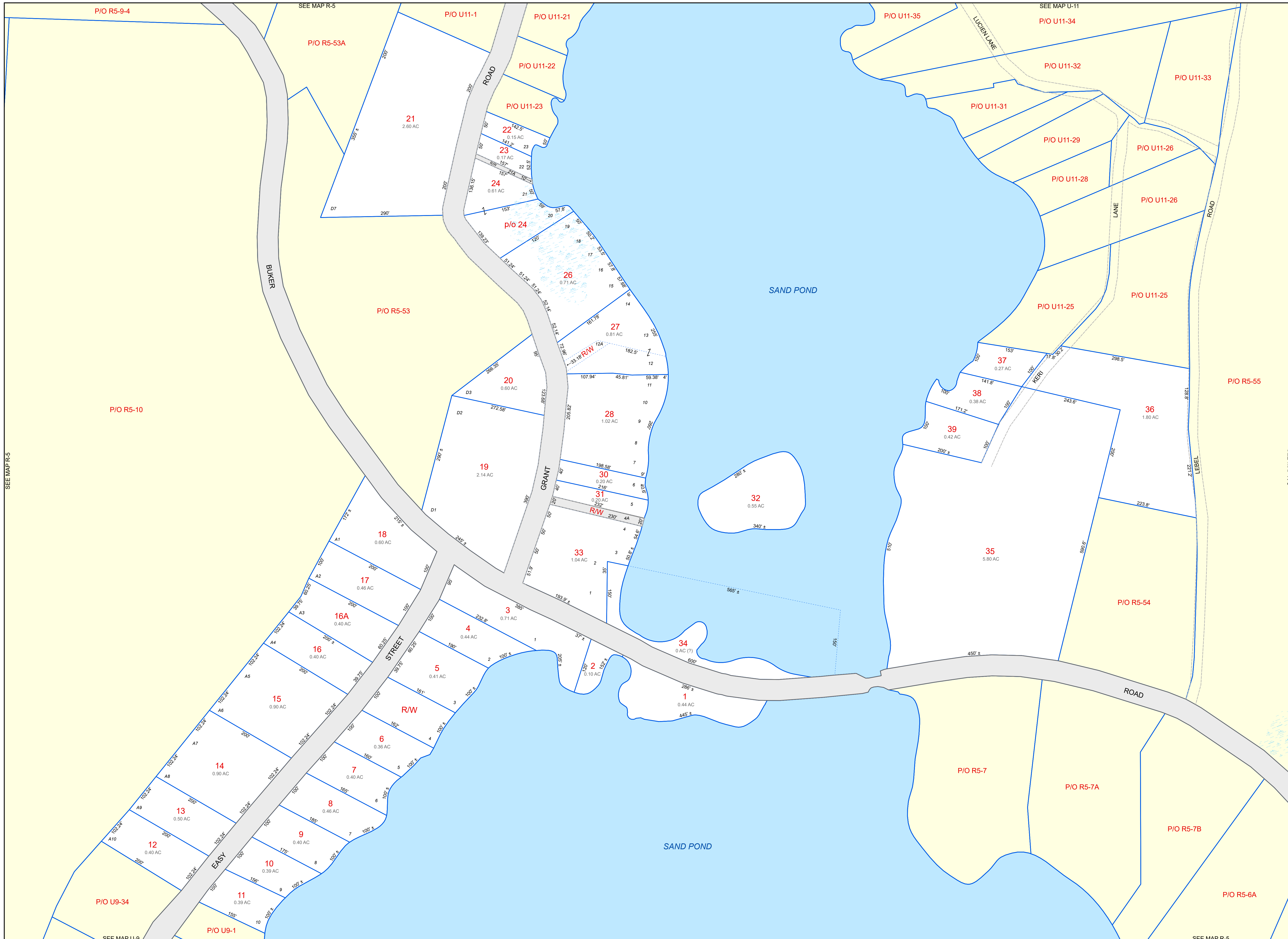


Original map created by John E. O'Donnell & Associates, Inc.
 Map updated by LatLong Logic, LLC

Assessment date: April 1, 2025
 Print date: 4/29/2026

Litchfield Assessor's Office
 2400 Hollowell Road
 Litchfield, Maine 04350
 (207) 268-4721

U10



SEE MAP R-5

SEE MAP R-5

P/O R5-9-4

SEE MAP R-5

P/O U11-1

P/O U11-21

P/O U11-35

SEE MAP U-11

P/O U11-34

P/O U11-32

P/O U11-33

P/O R5-53A

21
2.60 AC

P/O U11-22

P/O U11-23

22
0.15 AC

23
0.17 AC

24
0.61 AC

p/o 24

26
0.71 AC

27
0.81 AC

P/O R5-53

20
0.60 AC

19
2.14 AC

18
0.60 AC

17
0.46 AC

16A
0.40 AC

16
0.40 AC

15
0.90 AC

14
0.80 AC

13
0.50 AC

12
0.40 AC

11
0.39 AC

10
0.39 AC

9
0.40 AC

8
0.46 AC

7
0.40 AC

6
0.36 AC

5
0.41 AC

4
0.44 AC

3
0.71 AC

2
0.10 AC

30
0.20 AC

31
0.20 AC

32
0.55 AC

33
1.04 AC

34
0.44 AC (7)

1
0.44 AC

2
0.10 AC

3
0.71 AC

4
0.44 AC

5
0.41 AC

6
0.36 AC

7
0.40 AC

8
0.46 AC

9
0.40 AC

10
0.39 AC

11
0.39 AC

12
0.40 AC

13
0.50 AC

14
0.80 AC

15
0.90 AC

P/O U11-31

P/O U11-29

P/O U11-28

P/O U11-26

P/O U11-25

P/O U11-25

P/O U11-25

P/O U11-25

P/O U11-25

P/O U11-25

P/O U11-25

P/O U11-25

P/O U11-25

P/O U11-25

P/O U11-25

P/O U11-25

P/O U11-25

P/O U11-25

P/O U11-25

P/O U11-25

P/O U11-25

P/O U11-25

P/O U11-25

P/O U11-25

P/O U11-25

P/O U11-25

P/O U11-25

P/O U11-25

P/O U11-25

P/O R5-55

P/O R5-54

P/O R5-7

P/O R5-7A

P/O R5-7B

P/O R5-6A

P/O U9-34

P/O U9-1

SEE MAP U-9

SEE MAP R-5