

The Litchfield Sodalite

Vol. XIX No. 2

A Newsletter for Litchfield, Maine

February 1, 2019

Historical Society Of Litchfield Trivia Quiz

February question: Before the Thorofare causeway was built, a "ferry" crossed Pleasant Pond. What was the name of the family that ran the ferry? January question: Which of early Litchfield's neighboring towns was once known as "Bloomingsboro"? answer: Monmouth. To read more about the history of Litchfield go to WWW.HistoricalSocietyofLitchfieldMaine.org

Knitting Night

The monthly knitting night will be February 14 at the Senior Center Building on Academy Rd from 6 pm to 8pm. For more info call Lori at 754-3931.

WINTER NATURE DAY CAMP WITH FRIENDS OF THE COBBOSSEE WATERSHED

The Friends of the Cobbossee Watershed's annual Winter Nature Day Camp will be held during February school vacation week at Camp Mechuwana on Lower Narrows Pond in Winthrop. Two (2)-day camp sessions will be offered- February 18 & 19 and February 20 & 21, 2019. Both sessions, open to children in grades 3-5, will run from 9 a.m. to 3 p.m. each day and will include a mixture of indoor and outdoor activities, including snowshoeing, winter tracking, and games. Our culminating activity will be learning to ice fish with Ryan Burton of the Cobbossee Watershed District. Cost for each 2-day camp session is only \$90/pp and includes the use of all equipment along with afternoon cocoa and snack. Early registration is highly recommended as space is limited to 20 campers per session! Registration forms can be downloaded at www.watershedfriends.com. For more information, please contact Cami Wilbert, Education & Outreach Director at 621-4100 or camil@watershedfriends.com.



Senior Center

The Center will be closed on President's day 2/18/19. **"Sand for Seniors"** - a 5 gal. bucket of sand will be delivered to your home. Call 215-4595, 441-9005 or 268-4237 to be put on the list.

Bowling will be on Thursday, 2/14 at Sparetime Recreation, Lewiston. Leaving at 12, call 441-9005 to carpool.

Knitting with Lori at 6 p.m. Thursday 2/14

The book club meeting is on Wednesday, 2/13 at 12:15 at the Center. The book to be discussed is "Cottage by the Sea" by Debbie Macomber.

Making cards with Anne Thompson is on Wednesday 2/20 at 1 p.m. Come and use your imagination.

The pot luck lunch and celebration of February birthdays is Friday, 2/15.

Line dancing instruction Mondays at 9:30-11 for beginners and advanced.

Aerobics classes on Wednesday and Friday at 8:30-9:30.

The Carol Bailey String Band music practice is at 10-12 on Wednesdays. Come and join us for a fun time.

Feldenkrais Awareness through Movement exercise lessons are at 9:30-10:30 on Friday 2/1,8,15,22 with Lindsay Nelsen.

Cribbage/Unlucky 7's games for fun on Mondays at 11 and Fridays 10-12. Bring a lunch and stay for games on Mondays in the afternoon & on Friday cards/games.

The thrift shop is open Monday 10-11 on 2/4 only.

The Senior's Advisory Committee meeting is changed to Tuesday at 10 on 2/26 for February only.

The 7th. Senior Center Summit for area Senior Centers will be hosted by the Wiscasset Senior Center on Thursday, 2/21 at 10 a.m.

Reminder: Exercise equipment available and Wii games for use 9-4 Monday and Friday; 9-12 Wednesday ***If RSU 4 schools are closed due to the weather, the Senior Center will be also.***

Looking for people interested in playing board games i.e. Scrabble, Backgammon, Checkers, Monopoly, or other types of games like Uno, Phase 10, etc. Let us know if you are interested.

Please stop in to the Senior Center for more information a cup of coffee or tea and check out our books (paperback & hard cover), or work on the 1000-piece puzzle. We would like to meet you.

The Litchfield Senior Center is located at 466 Academy Road next to the Libby-Tozier Elementary School. The telephone number is 215-4595 or 441-9005.

RSU 4 News

It is time to start sign-ups for Pre K or Kindergarten for the 2019-20 school year. If you have a child that will be 4 on or before October 15th please call to sign up for Pre-K. If you have a child that will be 5 on or before October 15th please call to sign up for Kindergarten. You can call Sabbatus Primary at 375-4525 or Libby-Tozier at 268-4137. Winter vacation begins on February 18 through February 22.

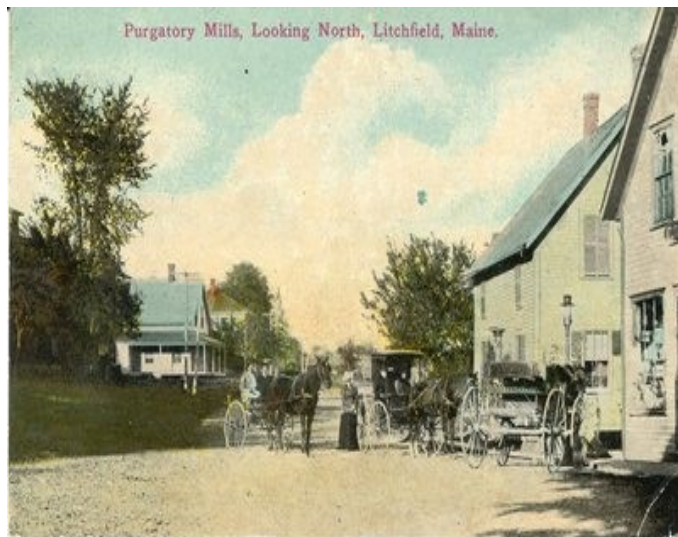
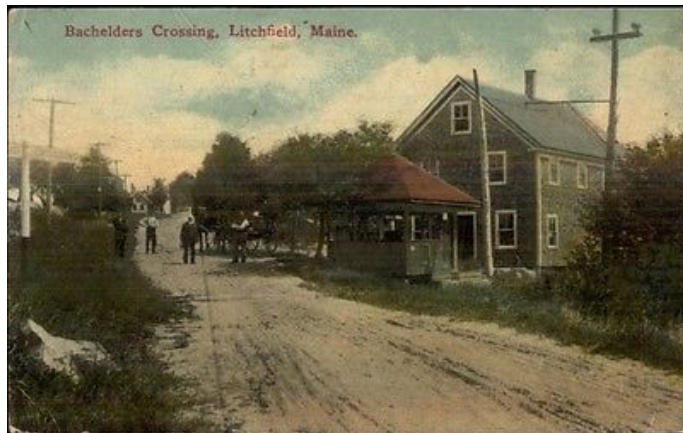
Town Manager/Clerk's Corner

The Town Office will be closed on Monday, Feb 18th for President's Day.

"Shelving," or winging back the upper layers of snow on the snow banks to make room for more snow is what our plow drivers have been doing this winter to ensure room for more storms.

A special town meeting will be held in February to discuss a proposed local Food Sovereignty ordinance and also to potentially allow transfer station unexpended funds to carry over to the next fiscal year. Date and time were not available at time of publication, please check the town website, or look for notices posted at the Town Office and local stores the first week of February.

Upcoming meetings at the Town Office:
Budget Committee Feb 4th, and Feb 18th 6:30;
Litchfield Planning Board, Feb 7th, 6:30;
Litchfield Board of Selectmen, Feb 11th and 25th, 6:30 pm



Thank you!



To all the road workers out there
that keep our roads clear.

February Community Calendar

| | | | |
|---------|---|---------|--|
| 1 Fri | Town Office , closed Transfer Station , 8a.m.-4p.m. | 17 Sun | |
| 2 Sat | Transfer Station , 8 a.m.-4 p.m. Academy Thrift Store , 9 a.m.-noon Litchfield Sportsmen's Club , Public Bean Supper & Music Jam, Supper 5-6, Jam 6-8, \$7/ person | 18 Mon | President's Day – Town Office Closed Budget Comm -6:30; Town Office  |
| 3 Sun | Litchfield Sportsmen's Club , Country Sunday with live music, Noon-4:30, \$6/person | 19 Tue | Daisy Girl Scouts -Libby Tozier-6:30pm |
| 4 Mon | Lit. Rec —6:30pm; Town Office Budget Comm -6:30; Town Office | 20 Wed | TOPS -Carrie Ricker School; 6:30p.m |
| 5 Tue | Daisy Girl Scouts -Libby Tozier-6:30pm Conservation Comm. -6:30pm, Town Office | 21 Thur | |
| 6 Wed | TOPS -Carrie Ricker School; 6:30p.m | 22 Fri | Town Office , closed Transfer Station , 8a.m.-4p.m. |
| 7 Thur | | 23 Sat | Transfer Station , 8 a.m.-4 p.m. Academy Thrift Store , 9 a.m.-noon Public Breakfast , 7am-9:30am, Litchfield Sportsmen's Club \$7 |
| 8 Fri | Town Office , closed Transfer Station , 8a.m.-4p.m. | 24 Sun | |
| 9 Sat | Transfer Station , 8 a.m.-4 p.m. Academy Thrift Store , 9 a.m.-noon Amer. Legion Ladies Aux , LegionHall, 10am | 25 Mon | Selectman Meeting , Town Office-6:30pm |
| 10 Sun | | 26 Tue | Daisy Girl Scouts -Libby Tozier-6:30pm Senior Advisory Comm. 10am; Senior Center |
| 11 Mon | Selectman Meeting , Town Office-6:30pm Litchfield Sportsmen's Club Meeting, 7pm | 27 Wed | RSU4 School Board-OHHS ; 6:30p.m. TOPS -Carrie Ricker School; 6:30p.m |
| 12 Tue | Daisy Girl Scouts -Libby Tozier-6:30pm | 28 Thur | |
| 13 Wed | RSU4 School Board-OHHS ; 6:30p.m. TOPS -Carrie Ricker School; 6:30p.m | | |
| 14 Thur |  | | |
| 15 Fri | Town Office , closed Transfer Station , 8a.m.-4p.m. | | |
| 16 Sat | Transfer Station , 8 a.m.-4 p.m. Academy Thrift Store , 9 a.m.-noon | | |

BOX HOLDER

Contents:

1. Historical Society, Senior Center Corner
2. Town Manager/Clerk's Report
3. February Calendar
4. Newsletter Deadline, Road Advisory Committee

ECRWSS
PRSR STD
U.S. Postage
PAID
Litchfield, ME
Permit #2

The Litchfield Sodalite
Litchfield Town Office
2400 Hallowell Road
Litchfield, ME 04350
Tel.: 207-268-4721 FAX: 207-268-2196
sodalite@litchfieldmaine.org
www.litchfieldmaine.org
Open: Mon.: 8:30 a.m.—7:00 p.m.
Tue.—Thu.: 8:30 a.m.—6:00 p.m.
Closed: Every Fri.

Road Advisory Committee News

What can you do to control invasive plants in winter? Perhaps do some research and design for next season. In January 2018 a Maine law went into effect banning the sale of 33 different plants. You can access that rule by searching for “Invasive Plant Rules, Maine”. Perhaps the surprise isn’t the rampant bittersweet, honeysuckle and Japanese knotweed/bamboo but some of the ‘garden plants’. Here is a sample: the dark red leaved Crimson King Norway Maple, a full size tree; the cherry red fall colored burning bush is found growing in the low maintenance areas like the woods or roadsides; purple leaved Japanese barberry as well as green have been found in the woods. Common hedge privet is on this list. All of these plants were on the recommended list of plants when I went to school for Horticulture in 1981; during my 30 years running a design build landscape company I planted some of them for their ornamental features. Now I suggest they must be removed. There are so many wonderful plants that can be put in their place. Maine Natural Areas Program, which is under the Department of Agriculture, Conservation and Forestry, has information about invasive plants and links to Cooperative Extension which has many education offerings; see Extension Bulletin #2500 for a good listing of what plants can go well where. Lindsay Nelson 268-4569

March Issue Deadline:

Feb. 20, 2019, 5 p.m.
Deliver material in any of the following ways: **E-mail**

(sodalite@litchfieldmaine.org) U.S. mail to:
Town Office, 2400 Hallowell Rd. 04350

Hand deliver to: Town Office, 2400 Hallowell Rd

