

The Litchfield Sodalite

Vol. XXIV No. 1

A Newsletter for Litchfield, Maine

January 1, 2024

Historical Society Of Litchfield Trivia Quiz

January question: Litchfield's water powered mills were driven by flowing water fillings "buckets" placed along the wheel's periphery. The mill type was determined by whether the water first struck the top, middle, or bottom buckets. What type of mill had the water strike in the middle of the wheel? **December question:** Which of Litchfield's early settlers was, when he died in 1845 at the age of 94, the oldest living commissioned officer of the Continental Army. answer: Hugh Mulloy. To read more about the history of Litchfield go to

WWW.HistoricalSocietyofLitchfieldMaine.org

LITCHFIELD ACADEMY THRIFT SHOP

Is it time to retire some of your clothes to replace them with what you got or Christmas? Lucky you! We take donations any time we are open. Tell an out-of-town friend about us. Share the good news! Open every Saturday, 9 - noon.

LITCHFIELD FOOD BANK

We hope you are celebrating with us! We are so excited to have the new building up! Next comes installation of vinyl siding and insulation (rock wool, not fiberglass). We are inviting volunteers to help to save on the expenses. We are willing to train! While the post-holiday schedule has not been set, we would like to invite you to call to put your name on the list and let us know if week days or weekends work best for you. When we schedule a work day, we will call you. Rayna's cell, 557-2680, leave a message, please speak clearly and provide a phone number. A big thanks to the Carol Bailey String Band and Chorus for a wonderful Christmas Music concert and to the Litchfield Sportsmen's Club for donating their building. Everyone had a great time.

Litchfield Senior Center

NEW CENTER PHONE # 446-6275

The Litchfield Senior Center is open and available to all, no fee to attend.

"Aging is more fun when you share it."

If the flag is out at the Center, come on in. All dates and times are subject to change.

Senior Center is closed on Monday, January 1, New Year's Day and Monday, January 15, Martin Luther King's Day

Line Dancing instruction for all on Mondays 9:30-11 at the Sportsmen's Club.

The Senior Center will open 11:30 to 2 on Mondays after Line Dancing, come in for exercise, cards or check out the books or puzzles. We have new puzzles and books coming into the Center all the time.

Tai Chi exercises on Wednesdays beginning January 3 at 9 followed at 10 by practice for the Carol Bailey String Band and Chorus at the Sportsmen's Club.

A Christmas and New Year's party will be held at the Senior Center on Friday, January 5th 11-3. Come 1 and come all for a chance to get together and celebrate. We will have finger food and desserts, bring something to share. Bring a wrapped gift between \$5 and \$15 for the gift exchange game.

Come to the Senior Center for morning exercise with Dian & friends on Fridays 8:30-9:15. Join in the indoor walking, or use the exercise equipment. Stay for cards at 10, BYO lunch at noon and then more cards and games in the afternoon. Pick out books and/or puzzles to take home.

The book club meeting is on Monday, January 22 at 1 pm. at the Senior Center. The book for January is "What We Keep" by Elizabeth Berg

The Senior's Advisory Committee meeting is held at the Senior Center at 1 on Thursday, January 18.

The Sand for Seniors program is taking orders, call 446-6275 to leave your name, address and phone number to be put on the list.

Reminder: Exercise equipment available for use when the Center is open. The Senior Center is located on Academy Rd. next to Libby Tozier Elementary School. Stop in for more information, or check out our books, puzzles and items on the table you may like. Donations are appreciated.

Litchfield Transfer Station

Happy New Year!!! We hope everyone had a Merry Christmas and are looking forward to a Happy New Year. We weathered the windstorm the week before Christmas and are NOT looking for a repeat. Thanks to Jim N. for stepping up and shouldering the workload for a couple of weekends in December. It is much appreciated. We are starting to look at our fee schedule and comparing it with other transfer stations around the area. We will be sharing more information in future Sodalites and handouts at the Transfer Station. IF you have questions, ask us at the Transfer Station. Stop in and say Hi to John C. and John U on Friday and Saturday.

The LITCHFIELD COMMUNITY PARK in WINTER 2324 Hallowell Road

THINGS TO SEE: How many TREE BARK colors besides grey? (at least four) Look for tree and shrub FRUIT which includes cones and berries of all sizes and colors

THINGS TO DO: That only depends on the weather



Litchfield



ME

* Designed by TownAngelsSA.com

Town Clerks Corner

The Town Office will be closed Monday, January 1st, for the New Year's Day Holiday and Monday, January 15th for Martin Luther King Jr. Day.

Thank you to everyone who supported their friends and neighbors during the recent extended power outage. And a big thanks to all of our Town employees for going above and beyond to keep our residents safe and informed.

The Ad Hoc Transfer Station Relocation Committee is looking for volunteers. This new committee will explore options for improving operations at our current location or moving to a larger location. Please call the Town Office if you are interested.

It's winter in Maine, please drive carefully. Litchfield winter roads are among the best maintained in the area, but please drive courteously and give our plows some space. We monitor the weather and pre-treat icy storms whenever possible. But if roads ice up unexpectedly for the morning commute and will thaw within 2 hours, then by the time the trucks get there it would have been small gain at large expense. If the weather is iffy, the Road Commissioner drives the routes and will make the tough calls.

We recommend that everyone have a highly visible address number on their house or mailbox. A good option is the reflective address signs offered for \$20 by Litchfield Fire & Rescue. Order forms are available at the Town Office.

2024 Dog Licenses – \$25.00 late fee starts Feb 1 - You may license your dog(s) for 2024 at the Town office (beginning October 15th) or online from the link on the right at www.Litchfieldmaine.org. If rabies vaccinations have been updated, please bring a copy of the new vaccination information. To avoid a \$25.00 late fee your dog must be licensed by January 31, 2024.


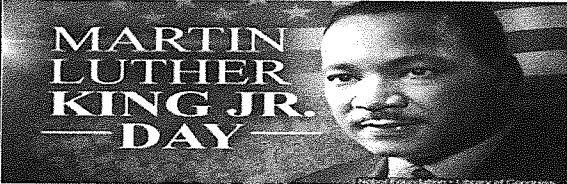
2024 Snowmobiles and Boat Registrations; Fishing and Hunting Licenses Snowmobiles may be registered for 2024 at the Town Office, or online. Links are available at www.Litchfieldmaine.org at the upper right corner of the home page.

Fuel Assistance - Applicants for the KVCAP Fuel Assistance Program should contact KVCAP directly by calling either 1-800-542-8227 ext. 1500 or (207) 859-1500 to schedule an appointment. Applicants may also access the KVCAP website (www.kvcap.org) click "For The Home", select "Heating Assistance", click the highlighted "Click Here" and book your appointment. Information is available in the Town office.

Creators 4H

The Creators 4H will meet on Jan 13th at the Senior Center on Academy Rd, Litchfield at 1pm. For more information, please text or call Lori 754-3931.

January Community Calendar

1 Mon		17 Wed	Lit Road Comm —6:00pm, Town Office Food Bank -4pm-6pm; 491 Richmond Rd
2 Tue		Lit. Fire/Rescue Officers Meeting , 6:00pm	18 Thur
3 Wed	Food Bank -4pm-6pm; 491 Richmond Rd	19 Fri	Town Office , closed Transfer Station , 8am-4pm
4 Thur	Lit Planning Board — 6:30pm Food Bank -10am-12pm; 491 Richmond Rd	20 Sat	Transfer Station - 8am-4pm Academy Thrift Store —Open 9am-12pm
5 Fri	Town Office , closed Transfer Station , 8am-4pm	21 Sun	
6 Sat	Transfer Station - 8am-4pm Academy Thrift Store —Open 9am-12pm Sportsman's Club -Public supper & Jam \$10. Supper 5 to 6 Jam 6:30 to 8	22 Mon	Lit. Selectmen's Meeting ; 6:30pm, Town Office-zoom available-see website.
7 Sun	Sportsman's Club -Country Sunday 12 to 4; \$8	23 Tue	
8 Mon	Lit. Selectmen's Meeting ; 6:30pm, Town Office-zoom available-see website. Lit. Sportsman's Club Meeting —7pm; Annual Meeting to Follow	24 Wed	RSU4 School Board -Central Office-6:30pm Food Bank -4pm-6pm; 491 Richmond Rd American Legion Post 181 -
9 Tue	Lit. First Responders Meeting -6:00 pm,	25 Thur	Food Bank -10am-12pm; 491 Richmond Rd
10 Wed	RSU4 School Board -Central Office-6:30pm Food Bank -4pm-6pm; 491 Richmond Rd	26 Fri	Town Office , closed Transfer Station , 8am-4pm
11 Thur	Food Bank -10am-12pm; 491 Richmond Rd	27 Sat	Transfer Station - 8am-4pm Academy Thrift Store —Open 9am-12pm
12 Fri	Town Office , closed Transfer Station , 8am-4pm	28 Sun	
13 Sat	Transfer Station - 8am-4pm Academy Thrift Store —Open 9am-12pm	29 Mon	
14 Sun		30 Tue	
15 Mon	Lit. Recreation Comm -6:15pm— Town Off Town Office Closed	31 Wed	Food Bank -4pm-6pm; 491 Richmond Rd
			
16 Tue	Lit Fire & Rescue Meet -6:00p, Central Sta		

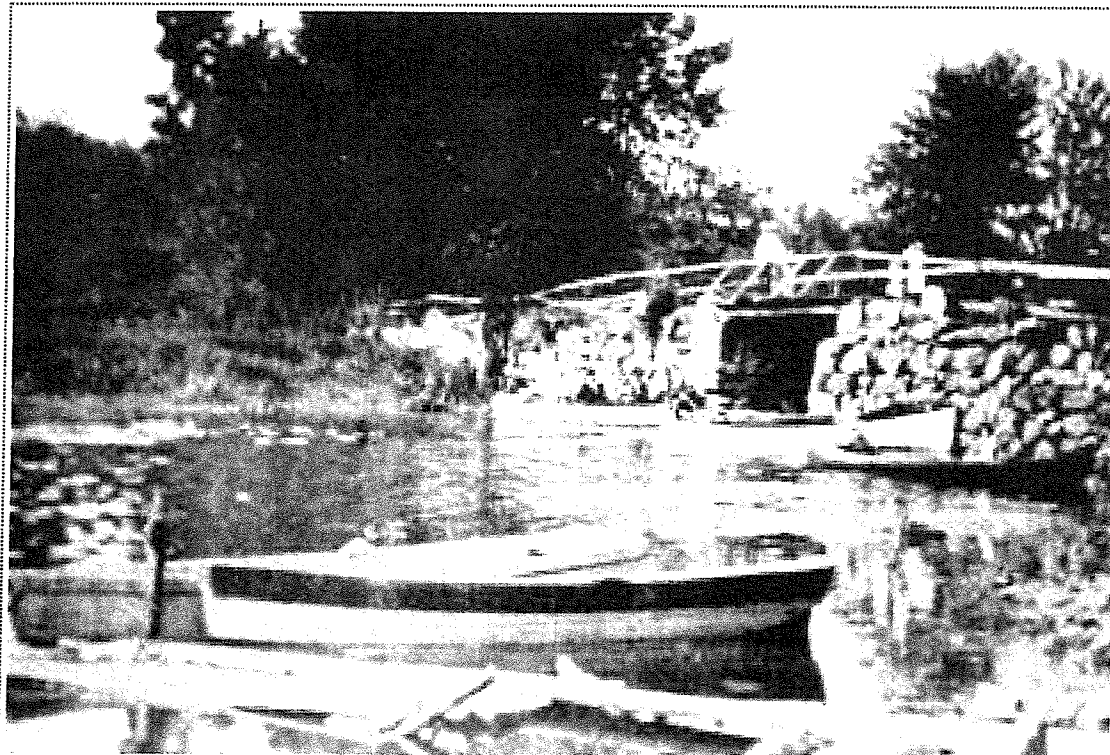
- Contents:**
1. Historical Society, Senior Center Corner
 2. Town Manager/Clerk's Report
 3. January Calendar
 4. Newsletter Deadline

BOX HOLDER

ECRWSS
 PRRST STD
 U.S. Postage
 PAID
 Litchfield, ME
 Permit #2

The Litchfield Sodalite
 Litchfield Town Office
 2400 Hallowell Road
 Litchfield, ME 04350
 Tel.: 207-268-4721 FAX: 207-707-8485
sodalite@litchfieldmaine.org
www.litchfieldmaine.org
 Open: Mon.—Wed.: 8:00 a.m.—4:00 p.m.
 Thurs.: 8:00 a.m.—6:00 p.m.
 Closed: Every Fri.

4 The Litchfield Sodalite



February Issue Dead-
line: Jan. 20, 2024 5p.m.
 Deliver material in any of
 the following ways:
 email: [sodalite@litchfield](mailto:sodalite@litchfieldmaine.org)
[maine.org](http://www.litchfieldmaine.org) U.S. mail to:
 Town Office, 2400 Hal-
 lowell Rd. 04350
 Hand deliver to: Town
 Office 2400 Hallowell Rd

The
 Thorough-
 fare Bridge
 In The Early
 1900's