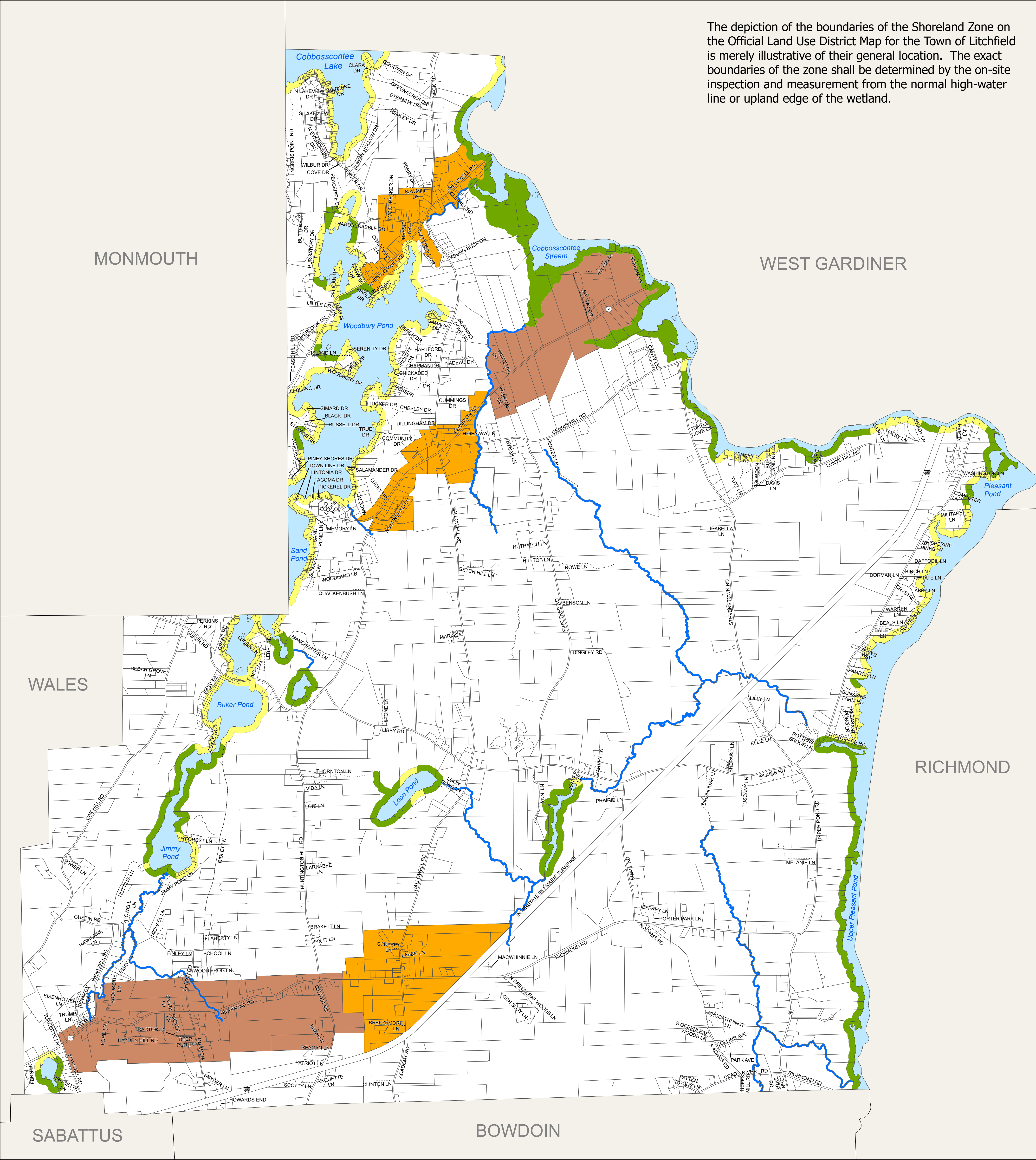


LITCHFIELD, MAINE

OFFICIAL LAND USE DISTRICT MAP

The depiction of the boundaries of the Shoreland Zone on the Official Land Use District Map for the Town of Litchfield is merely illustrative of their general location. The exact boundaries of the zone shall be determined by the on-site inspection and measurement from the normal high-water line or upland edge of the wetland.



Zoning Districts

- Rural District
- Village District
- Planned Development District

Shoreland Zoning Districts

- Limited Residential SZ
- Resource Protection SZ
- Stream Protection SZ

CERTIFICATION

MAP ADOPTED ON: _____
CERTIFIED BY: _____
Town Clerk



Source: Town of Litchfield and Maine Office of GIS
Original map created by John E. O'Donnell Associates
Updated by LatLong Logic, LLC (April, 2022)

Parcels last updated in 2021.